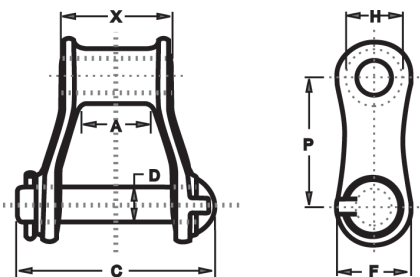


400 CLASS PINTLE CHAINS / 700 CLASS PINTLE CHAINS

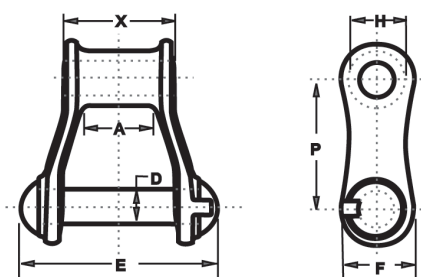
CONVEYOR CHAIN SERIES

CONVEYOR CHAIN

COTTERED

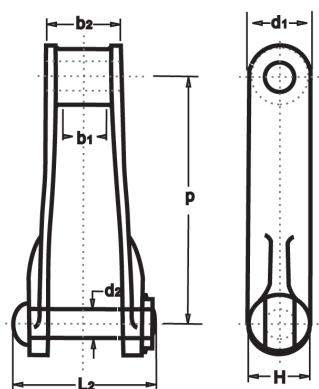


RIVETED

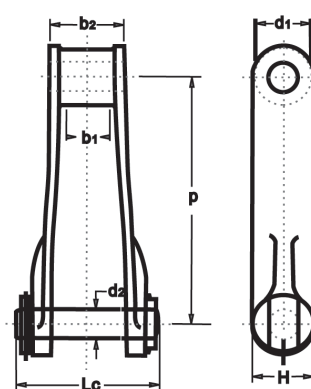


Chain No.	Pitch	Tooth face	Bearing length	Barrel Dia.	Pin Dia.	Plate depth	Pin length			Ultimate tensile strength	Weight
	P	A	X	H	D	F	E	C	Q	q	
	mm	mm	mm	mm	mm	mm	mm	mm	KN	kg/m	
442	34.93	15.75	26.92	14.22	7.87	19.05	47.75	51.56	34.7	2.09	
445	41.40	17.53	26.92	15.75	7.62	19.05	47.75	51.56	34.7	2.24	
452	38.25	15.75	27.69	17.53	9.65	21.34	52.32	56.38	40.5	2.98	
455	41.40	17.53	28.45	15.75	9.65	21.34	52.32	56.38	42.2	2.83	
462	41.50	22.23	36.58	18.29	11.18	23.88	60.45	65.02	52.0	3.73	
477	58.62	17.53	31.75	18.29	11.18	25.40	57.15	60.45	55.5	2.98	
488	66.27	23.88	41.15	22.35	11.18	23.88	69.85	74.68	63.6	4.32	
4103	78.11	28.45	47.75	31.75	19.05	38.10	82.55	90.42	127.2	8.49	

RIVETED



COTTERED



Chain No.	Pitch	Tooth face	Bearing length	Barrel Dia.	Pin Dia.	Pin length		Plate depth	Ultimate tensile strength	Weight
	P	b1	b2	d1	d2	Lr	Lc	H	Q	q
	mm	mm	mm	mm	mm	mm	mm	mm	KN	kg/m
720	152.40	28.45	45.97	35.05	17.53	84.07	87.38	38.10	127.2	6.25
720S	152.40	28.45	47.75	36.58	19.05	93.73	96.77	39.62	173.5	7.74
730	152.40	28.45	50.80	38.10	19.05	93.73	96.77	44.45	173.5	8.93
788	66.27	23.88	41.15	22.35	14.22	81.03	84.07	30.23	101.2	6.85