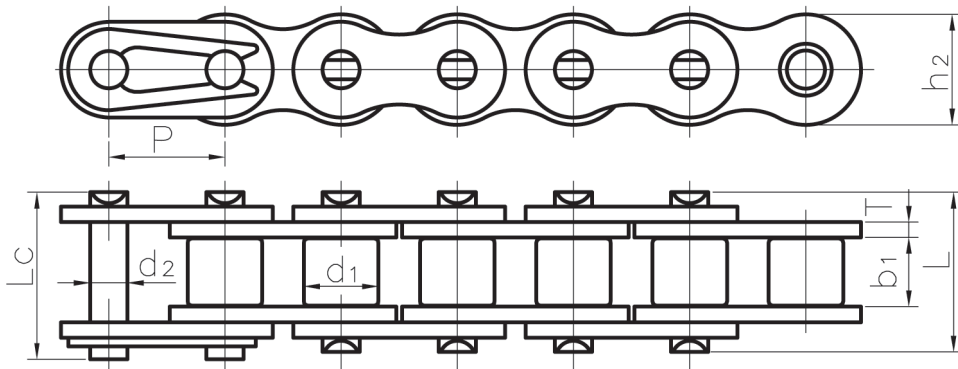


# STAINLESS STEEL CHAINS

## SPECIAL CHAIN SERIES

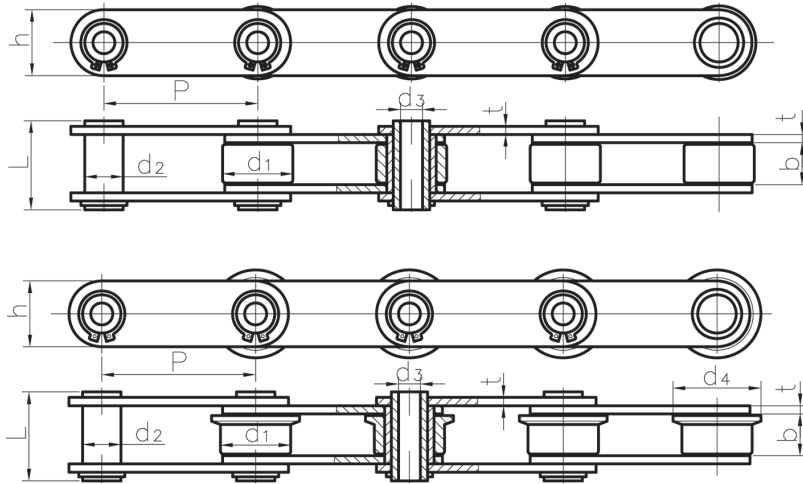


Chain No.	Pitch	Roller diameter	Inside Width	Pin diameter	Pin length		Inner plate depth	Plate thickness	Ultimate tensile strength	Weight per meter
	P	d1(max)	b1(min)	d2(max)	L(max)	Lc(max)	h2(max)	T(max)	Q	q
	mm	mm	mm	mm	mm	mm	mm	mm	KN	kg/m
25SS	6.35	3.30	3.10	2.31	8.7	8.7	5.9	0.75	2.34	0.15
35SS	9.525	5.08	4.68	3.58	12.0	13.2	9.0	1.27	5.4	0.35
40SS	12.70	7.92	7.85	3.96	16.6	17.9	12.0	1.52	10.4	0.66
50SS	15.875	10.61	9.4	5.08	20.5	22.6	15.0	2.00	19.0	1.10
60SS	19.05	11.91	12.57	5.94	25.9	27.7	18.0	2.42	21.8	1.51
80SS	25.4	15.88	15.75	7.92	32.7	35.0	24.0	3.25	38.9	2.62
100SS	31.75	19.05	18.90	9.53	40.4	44.7	30.0	4.0	59.0	3.94
120SS	38.10	22.23	25.22	11.10	50.45	53.3	35.8	4.9	92.8	5.94
140SS	44.45	25.40	25.22	12.70	53.8	57.8	41.5	5.6	131.6	7.50
160SS	50.80	28.58	31.55	14.27	64.1	67.8	48.0	6.4	179.2	10.2
06BSS	9.525	6.35	5.72	3.28	13.5	16.8	8.2	1.4/1.1	4.2	0.38
08BSS	12.70	8.51	7.75	4.45	17	20.7	11.8	1.5	10.0	0.74
10BSS	15.875	10.16	9.65	5.08	19.2	23.7	14.7	1.7	13.7	0.95
12BSS	19.05	12.07	11.68	5.72	22.5	24.2	16.0	1.85	18.5	1.16
16BSS	25.4	15.88	17.02	8.28	36.1	37.4	21.0	4.15/3.1	40.0	2.13
20BSS	31.75	19.05	19.56	10.19	41.3	45.0	26.4	4.5/3.5	59.0	3.73
24BSS	38.10	25.40	25.40	14.63	53.4	57.8	33.2	6.0/5.0	92.8	7.15

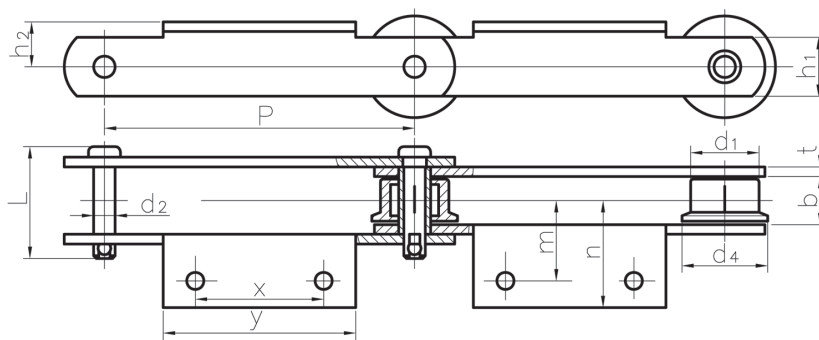
Stainless steel chain are suitable for corrosive conditions involving food, chemicals, pharmaceuticals, also suitable for high and low temperature conditions.

# STAINLESS STEEL CHAINS

## SPECIAL CHAIN SERIES



Chain No.	Pitch	Roller diameter		Inside Width	Pin diameter		Pin length	Inner plate depth	Plate thickness	Ultimate tensile strength	Weight per meter
	P	d1(max)	d4(max)	b(max)	d2(max)	d3(max)	L(max)	h(max)	t(max)	Q	q
	mm	mm	mm	mm	mm	mm	mm	mm	mm	KN	kg/m
SS100R	100	45	-	27	25.02	19.5	54.6	41.3	4.9	75	6.21
SS100F	100	44.7	55	27	25.02	19.5	54.6	41.3	4.9	75	6.76



Chain No.	Pitch	Roller diameter		Inside Width	Pin diameter	Pin length	Attachment Dimensions								Ultimate tensile strength	Weight per meter
	P	d1(max)	d4(max)	b(min)	d2(max)	L(max)	t	h1	h2	m	n	x	y	d3	Q	q
	mm	mm	mm	mm	mm	mm	mm	mm	mm	mm	mm	mm	mm	mm	KN	kg/m
SS200F	200	50.8	64.5	30	14.5	69.3	6.3	39	28	50	67	80	120	12	129	6.08