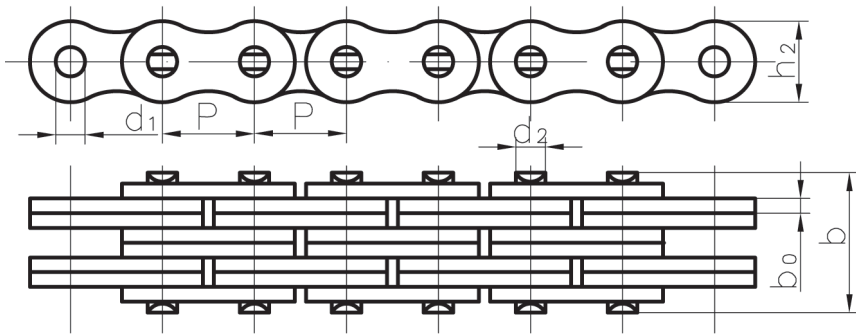


LEAF CHAIN (AL SERIES)

DRAGGING CHAIN SERIES



| Chain No. | Pitch | | Plates Lacing | Thickness of plates | Inside Plate Hole dia. | Pin dia. | Plate depth | Pin Overall Length | Ultimate tensile strength | Weight per meter |
|-----------|--------|--------|---------------|---------------------|------------------------|----------|-------------|--------------------|---------------------------|------------------|
| | P | P | | bo(max) | d1(min) | d2(max) | h2(max) | b(max) | Q | q |
| | in | mm | | mm | mm | mm | mm | mm | KN | kg/m |
| AL422 | 1/2" | 12.70 | 2x2 | 1.52 | 4.01 | 3.96 | 10.30 | 8.4 | 17.0 | 0.35 |
| AL444 | | | 4x4 | | | | | 14.8 | 34.0 | 0.67 |
| AL466 | | | 6x6 | | | | | 21.2 | 51.0 | 1.0 |
| AL522 | 5/8" | 15.875 | 2x2 | 2.05 | 5.13 | 5.08 | 13.00 | 10.4 | 28.3 | 0.63 |
| AL544 | | | 4x4 | | | | | 18.9 | 56.6 | 1.2 |
| AL566 | | | 6x6 | | | | | 27.4 | 84.9 | 1.75 |
| AL622 | 3/4" | 19.05 | 2x2 | 2.40 | 6.00 | 5.94 | 15.60 | 12.2 | 39.3 | 0.93 |
| AL644 | | | 4x4 | | | | | 22.1 | 78.6 | 1.6 |
| AL666 | | | 6x6 | | | | | 32.0 | 117.9 | 2.52 |
| AL822 | 1" | 25.40 | 2x2 | 3.20 | 8.01 | 7.94 | 20.55 | 16.4 | 69.5 | 1.54 |
| AL844 | | | 4x4 | | | | | 29.8 | 139.0 | 3.3 |
| AL866 | | | 6x6 | | | | | 43.2 | 208.5 | 4.01 |
| AL1022 | 1 1/4" | 31.75 | 2x2 | 4.00 | 9.60 | 9.53 | 25.85 | 19.5 | 103.0 | 2.37 |
| AL1044 | | | 4x4 | | | | | 36.7 | 206.0 | 4.9 |
| AL1066 | | | 6x6 | | | | | 53.2 | 309.0 | 7.3 |
| AL1222 | 1 1/2" | 38.10 | 2x2 | 4.80 | 11.18 | 11.11 | 31.20 | 24.0 | 140.0 | 3.65 |
| AL1244 | | | 4x4 | | | | | 43.8 | 280.0 | 7.05 |
| AL1266 | | | 6x6 | | | | | 63.6 | 420.0 | 10.5 |
| AL1444 | 1 3/4" | 44.45 | 4x4 | 5.60 | 12.78 | 12.70 | 36.20 | 51.1 | 370.0 | 10.34 |
| AL1466 | | | 6x6 | | | | | 74.3 | 555.0 | 13.0 |
| AL1644 | 2" | 50.80 | 4x4 | 6.40 | 14.36 | 14.29 | 41.60 | 58.2 | 465.0 | 12.98 |
| AL1666 | | | 6x6 | | | | | 84.6 | 697.5 | 18.0 |